

Modern Styled Whale Chrome Tap / Shower Mixer Range



Thank you for purchasing this Whale product.

For over 40 years Whale has led the way in the design and manufacture of freshwater and waste systems including:- plumbing, taps, showers and pumps, for low voltage applications. The company and its products have built a reputation for quality, reliability and innovation backed up by excellent customer service.

For information on our full product range visit: www.whalepumps.com

CONTENTS

1. Application
2. Warnings
3. Installation
4. Helpful Hints
5. Maintenance
6. Service Support Details
7. Warranty

Read the following carefully before installation

WARNING: Please note that incorrect installation may invalidate the warranty.

To the Fitter

Check that the product is suitable for the intended application, follow installation instructions and ensure all relevant personnel read the points listed below. Also ensure these instructions are passed on to the end user.

To the User

Read the following instructions carefully.

1. Application

This tap / shower mixer is intended for use in freshwater systems in recreational vessels / vehicles.

2. Warnings

Temperature Settings - To prevent scalding, (regardless of the water heating method or the control devices used), the temperature for the hot water supplied to the taps and showers should be controlled in the range of 43 °C to 60 °C (110 ° F to 140 ° F) with a fail safe set at 82 °C (180 °F).

CAUTION: Ideally, the temperature should be set at 46 °C (115 °F) for health and safety reasons, higher settings will increase the risk of scald injury. Those at greatest risk of scald injury include children, the elderly, disabled, and diabetics.

3. Installation

Before Installation

Prior to drilling / modifying the required mounting hole, ensure there is sufficient clearance for swiveling the tap / shower mixer spout and lever. Also ensure there is sufficient space under the mounting surface for fitting the tap / shower mixer and necessary plumbing.

CAUTION:

1. Check there are no hidden cables or pipes before drilling holes or installing screws

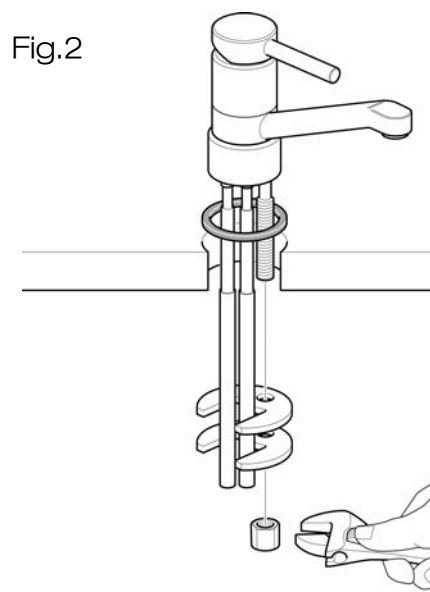
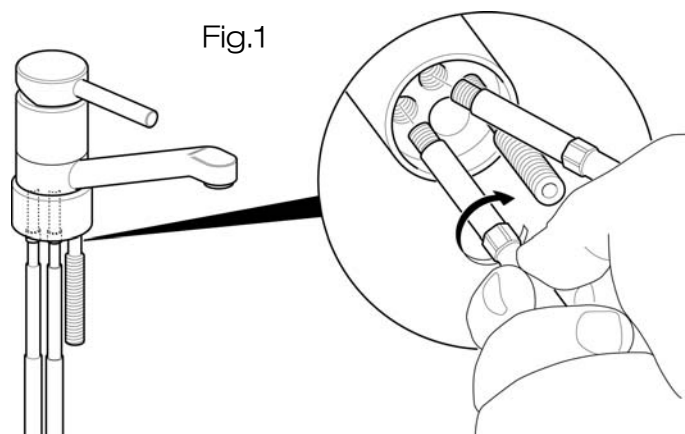
2. Exercise great care when using mains powered tools near water. The use of a residual current device (RCD) is recommended.

If fitting in place of an existing installed tap

Switch off the water heating system. Shut off water supply, open tap at lowest flow point and allow to run empty prior to carrying out the new installation.

Installation

- Locate mounting kit within box and remove nut from threaded bar.
- Now screw threaded bar (short thread) into tap / shower mixer, ensure this is tight using Phillips #2 star screwdriver (see Fig.1).
- If mounting surface is not drilled, use 32mm hole cutter to do this.
- Place o-ring into tap / shower mixer base groove (see Fig.2).
- Feed tap tails up through mounting surface hole (see Fig.2).
- Place and tighten tap tails using 11mm spanner, taking care not to damage o-rings in the process. Each of the tap tails have been assembled in correct tap hole, using tap lever for reference.
- Place securing 'C' washer, followed by securing 'C' clamp onto threaded bar (see Fig.2).
- Position tap / shower mixer as required and tighten nut onto threaded bar using 11mm spanner (see Fig.2).
- Connect tap tails ensuring that hot and cold are in correct orientation (1/2" BSP tap tails require 22mm spanner to tighten).
- When plumbing connections are fully tightened, turn on the water supply and check for leaks.



Modern Styled Whale Chrome Tap / Shower Mixer Range



4. Helpful Hints

Tools required: Phillips #2 star screwdriver 11mm and 22mm or an adjustable spanner, 32mm hole cutter and drill. A piece of insulating or masking tape applied to the mounting surface before marking out the fixing hole will help stop the drill from wandering, especially on tiled surface.

5. Maintenance

To clean, wipe with a soft soapy sponge, then rinse and wipe dry. Do not use an abrasive cleaner, scouring pad, powder or wire wool to clean the tap and shower mixer. Do not use any descaling agents.

If you live in a hard water area, limescale may build up around the spout of your tap. Clean this off with either vinegar or lemon juice. Do not attempt to remove this with a knife or any other sharp implement as this will damage the surface finish.

Winterizing

Freezing in winter may cause damage to the Whale tap / shower mixer.

To avoid this damage, ensure the system is completely drained.

1. Drain the fresh water tank either using the pump or a drain valve
2. Turn pump on and open all taps and the shower mixer (including drain valve) and allow the pump to purge the water from the system.
3. Turn off power isolator switch for water pump
4. Remember to leave all outlets open to avoid any damage.

6. Service Support Details

For installation or service advice please contact Whale customer support:

Tel: +44 (0)28 9127 0531

Fax: +44 (0)28 9146 6421

Email: info@whalepumps.com

7. Warranty

The Whale Metal Tap / Shower Mixer is covered by 2 years warranty.

For warranty details please refer to the enclosed copy of Whale's Statement of Limited Warranty

Ref: 181.39/08/v1